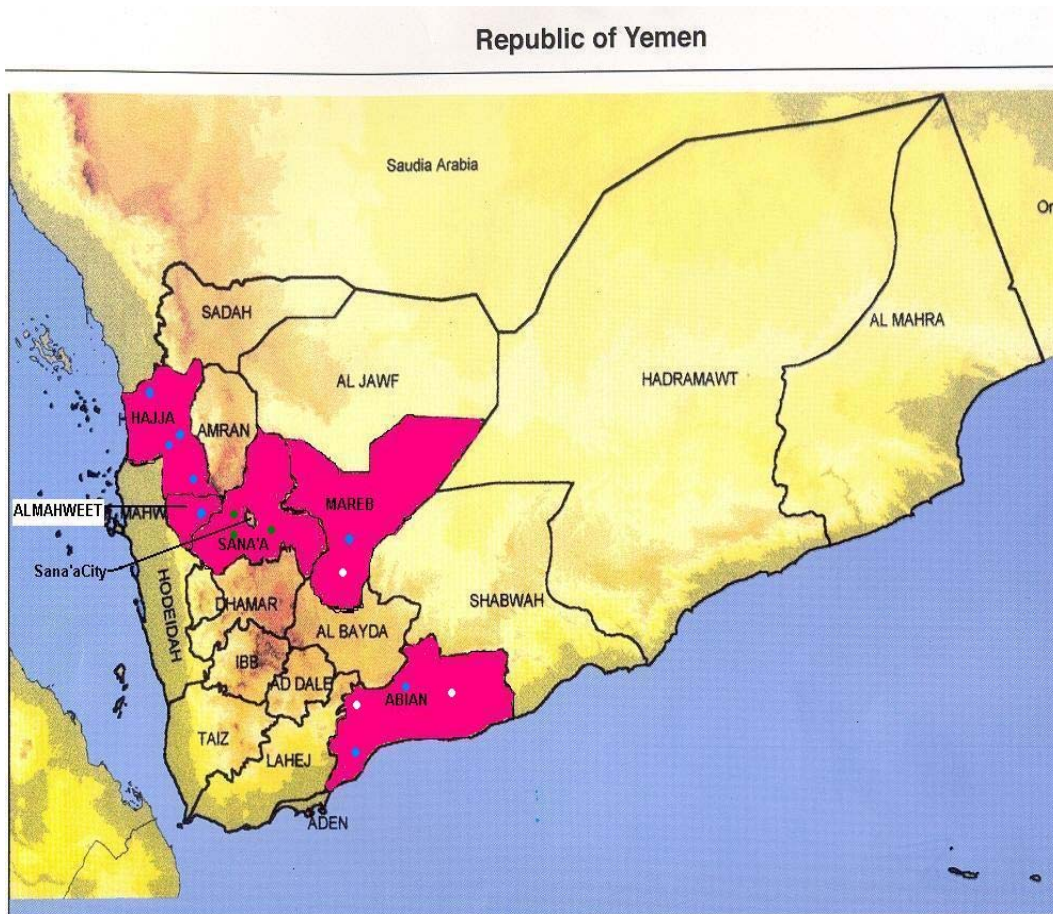




DED- CIM -



-

2006

563467 / 01 - 221179 :

563466 / 01 -252237 :

- 692 : .

yg-rhp@yg-rhp.com.ye :

	-	()	/	1
			/	2
	-		/	3
				4
			/	5
				6
				7
				8
				9
				10
			/	11
				12
				13
				14
				15
				16
			/	17
	-		/	18
				19
				20
				21

				22
			/	23
				24
				25
				26
				27
			/	28
				29
				30
	_____			31
				32
			/	33
			/	34

I.....	-1
5 :	-2
12	-3
18	-4
21	1-4
26	2-4
29	3-4
37	4-4
45	5-4
49	6-4
61	7-4
62	8-4
66	
68	
74	

1
2
3
4
5
6
7
8
9
10
11
12
13
14
15
16
17
18
19
20
21
22

MET

MET

MET

23
24

25
26
27

28

29
30
31

32

33

34

35

36

37

38

39
40

41
42
43

44
45
46

47

48

49

50

	3		1
		2003	2
2004			3
		2005	4
			5
			6
			7
(2005 - 2004)			8
	**		9
	2005	2004	

"

14

"

/

.2004

25

13

(

)

%99

:

%5.6

-

-

-

Partograph

(

)

stepping

-
-
-
-
-

585

%99

.
.
.

:

() /
 /
 /

-
-
-
-
-
-
-

1987

"

"

:

. -1
. -2
. -3
. -4
. -5
. -6

:
:

.(/) 6 1 -7
-8

%5 %15 %40

:
.
/
.
.1

1	
4	500
	%15
	%100
%15	%5
%1	

:

/

-1

-2

-3

:

-1

%15

-2

-3

365

.2003

:

.(

)

:

-1

-2

-3

)

(

-4

()

-5

-6

:

-2

1990

) 112 .
19721643 2004

(

555

%25

%75

%76

21

332

500

15

%49

:

(174) 148

(2004)

%70

%93

442

: 2004

%25

%3.02

11.38

39.2

(2003

)

6.2

63 :

63.8

62.9

%27.3

%69.1

%47

(2003

) %19.5 :

(2003

) %12.1 :

(2003

) %37.8

%41

%19

()

.%20

:
%75

(2010-2006)

-1

-2

-3

-4

2004 (2004 - 2003)

2185

511 (

10.000

5.9)

172

3496 2004

.%52

5.2

(

%18)

10.000

0.5

10.000

(5.000 0.6) 2375

- :
•
•
•

-
-
-
-
-

-1

-2

-3

-4

-5

-6

-7

-8

-9

%80

%20

2004

%5.2

1998

3 3 20

(2004 – 2000)

(2004 – 2000) 62 111

20 54

5 5

14

18

(2005 – 2000)

100.000

365

2003

%39

(%80)

%9

%64

20

%4

%20)

%24

%38

.(

%18

: 2003

(%69.2 %38.3) %45 -

(4.3 2.6) 3.2 -

%52 -

.(%30.9 %12) %16 -

%3.5 -

%15 -

%31 -

.() %8.6 -

%20

%11) %13

-

(

(%27

%9.2) %13.4

-

%9.4

-

%45

.(%37)

(%26)

/

(%48)

%49

.(%13)

.(

%41 %6)

:

"

"

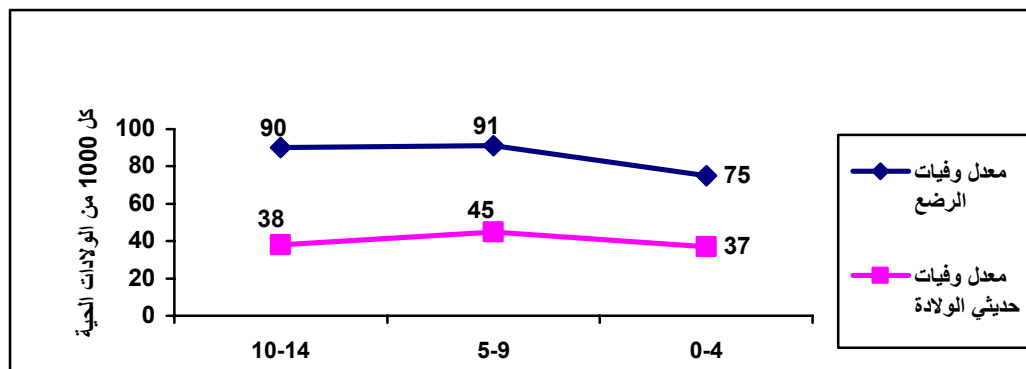
•

•

•

%50

(1).



1990

"

"

. 2015

100.000

88

. 2015

(2010 - 2006)

. 2010

100.000

238

-3

:

:

•

-1

-2

:

•

14

-1

"

"

)

(

/

/

:

14

•

•

•

•

•

•

•

•

•

•

-2

12 / 3

24

•

•

•

/

AMDD NA

.(2)

:

: - (1) -1

: :(2) -2

: :(3) -3

: :(4) -4

: - (5) -5

: - (6) -6

(2005 31 : 2004 1 - (7) -7)

: - (8) -8

: - (9) -9

-2

: -

(2)

:

◀

: /

-
-
-
-

•
•
•

/

◀

.(7)

() /

◀

.(8)

.(9 5)

/

◀

/

◀

.(6 4 3)

/

(1)

-

2005 11 6

:

-1

-2

-3

-4

-5

/

(9 2)

.(1)

-1

-2

-3

-4

2005	15	-
2005	18	-
2005	19	-
2005	20	-
2005	21	-

2005	24	2005	15
------	----	------	----

4	2005	22	17	1
3	2005	21	19	2
4	2005	24	19	3
1	2005	21	21	4
2	2005	24	22	5
14				



() (7)



(8)



SPSS

-4

:(2)

				1
				2
				3
				4
				5
				6
				7
				8
				9

:(4)

1	0	2	1	1	
10	4	3	2	6	
101	11	22	5	36	
163	66	155	117	109	

:(5)

0	0	2	0	0	
24	4	38	2	5	
0	0	0	0	3	
2	0	8	1	2	
7	3	27	14	0	

(7) (6)

2004 - 2003

()

:(6)

0	0	0	4	0	9	1	3	3	23	
13	172	0	42	0	75	1	47	36	106	
0	92	0	32	0	44	0	29	0	115	
13	153	0	66	47	145	0	140	188	471	
21	-	28	-	45	-	44	-	158	-	

:(7)

0	6	24	3	43	
22	28	39	13	29	
21	3	22	10	52	
19	4	19	21	25	

1-4

14

(1 2 4) 8

(1 2)

14

()

." "

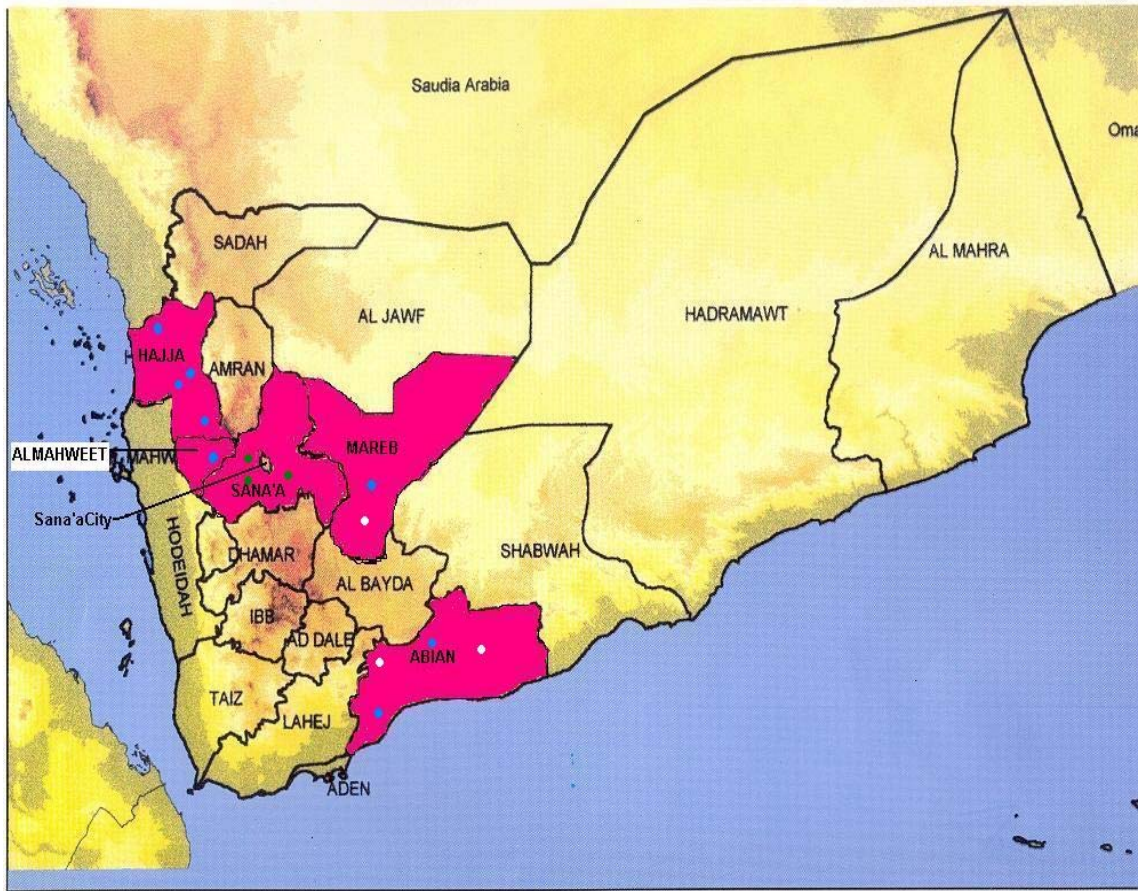
(8)

500.000

(8)

" "						
" "						
" "						
" "						
" "						
" "						

Republic of Yemen



=
=
=
()

(9)

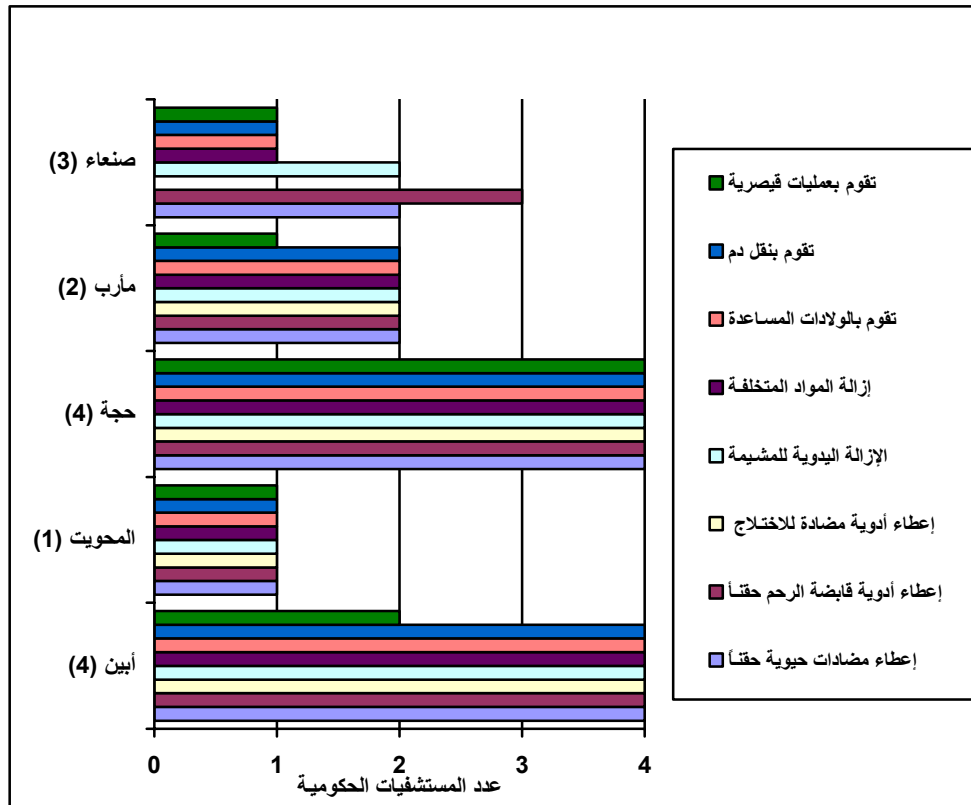
()

(9):

918,379	241,741	1,480,897	495,865	438,656	
0	1	4	1	2	
2	1	3	1	1	500
-2	0	+1	0	+1	

1-1-4

(2):



(2)

2-4

2-2-4

" "

(11)

. 2005

2004

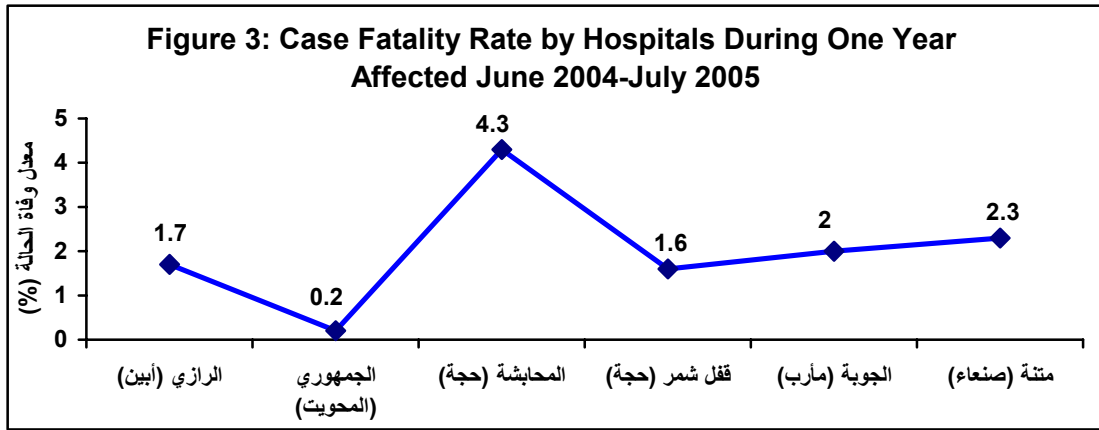
:(11)

1	1	2	3	1	4	
43	50	63	70	421	237	

:(3)

2005

2004



(3)

(%1)

%2 " "

(%1)

-1

-2

-3

)

(

:(12)

200	2	3	7	4	172	12	_____
9	1	1	1	2	0	4	
4.5%	50%	33.3%	14%	50%	0%	33.3%	
22	0	1	3	7	8	3	_____
1	0	0	0	0	1	0	
4.5%	-	0%	0%	0%	12.5%		
82	1	2	1	11	33	34	_____
1	0	0	0	1	0	0	
1.2%	0%	0%	0%	9%	0%	0%	

(12)

3-4

-1

-2

-3

1-3-4

(13)

(%15)

(14)

() " "

:(13)

325	981	194	499	276	674	1,177	1,867	
22,042	94,391	50,250	51,275	29,534	50,555	88,402	116,130	
864	3,700	1,970	2,010	1,158	1,982	3,465	4,552	
38%	27%	10%	25%	24%	34%	34%	41%	
+23%		+12%	-5%	+10%	+9%	+19%	+26%	

:(14)

9	128	735	207	379	421	
85,068	49,809	100,597	33,556	52,112	35,967	
3,335	1,953	3,943	1,315	2,043	1,410	
0.3%	7%	19%	16%	19%	30%	
-14.7%	-8%	+4%	+1%	+4%	+15%	

)

(

.(15)

:(15)

%							
4.3%	5,993	-	325	1950	674	3,044	
1.3%	1,879	872	207	-	-	800	
	7,872	872	532	1950	674	3,844	
		918,379	241,741	1,480,897	495,865	438,656	
	140,160	36,000	9,476	58,051	19,438	17,195	
	5.6%	2.4%	5.6%	3.4%	3.5%	22.4%	
	15%	15%	15%	15%	15%	15%	
	-9.4	-12.6	-9.4	-11.6	-11.5	+7.4	

2-3-4

:

)

(

(17)

(16)

.(

%15)

%83

%41

%67

)

(

%100

%41

%69

)

.(

:

-1

-2

-3

%13.4 2003

%55

%50

%45

%20

%18

%33

(16)

(%76

%59

) %68

2005

2004

:(16)

50	178	63	70	300	421	216	237	
76%	62%	61%	79%	83%	40.9%	73.6%	61.7%	
22,042	94,391	50,250	51,275	29,534	50,555	88,402	116,130	
864	3,700	1,970	2,010	1,158	1,982	3,465	4,552	
130	555	296	302	174	297	520	683	
38.5%	32.1%	21.3%	23.2	172%	142%	41.5%	34.7%	
-61.5%	-67.9%	-78.7%	-76.8%	+72%	+42%	-58.5%	-65.3%	

(17)

) %100

.(

:

-1

-2

-3

(%100 %65) %80

:(17)

0	57	43	70	361	27	
-	100%	39%	88.6%	74.2%	40.7%	
85,068	49,809	100,597	33,556	52,112	35,967	
3,335	1,953	3,943	1,315	2,043	1,410	
500	293	591	197	306	212	
0%	19.5%	7.3%	35.5%	118%	12.7%	
100%	-80.5%	-92.7%	-64.5%	+18%	-87.3%	

.(18)

%99

. 2005 2004

:(18)

%							
4.3%	1,535	-	50	611	421	453	
1.3%	558	100	70	-	-	388	
	2,093	100	120	1950	674	841	
		918,379	241,741	1,480,897	495,865	438,656	
	140,160	36,000	9,476	58,051	19,438	17,195	
	21,024	5,400	1,421	8,708	2,916	2,579	
	1%	1.9%	8.4%	7.0%	14.4%	32.6%	
	100%	100%	100%	100%	100%	100%	
	-99%	-98.1	-91.6%	-93%	-85.6%	-67.4	

3-3-4

%15

%5

%8.6

2003

(%4.8)

(19)

(20)

%0.3

%3.8

%5

(21)

(2005 2004)

%1.3

.%0.5

:(19)

20	65	5	26	14	96	48	175	
22,042	94,391	50,250	51,275	29,534	50,555	88,402	116,130	
864	3,700	1,970	2,010	1,158	1,982	3,465	4,552	
43	185	99	101	58	99	173	228	
2.3%	1.8%	0.3%	1.3%	1.2%	4.8%	1.4%	3.8%	
-2.7%	-3.2%	-4.7%	-3.7%	-3.8%	-0.2%	-3.6%	-1.2%	

:(20)

0	0	11	
		100,597	
		3,943	
		197	
		0.3%	
		-4.7%	

:(21)

449	-	20	110	96	223	
11	11		-	-	-	
460 CSs	918,379	241,741	1,480,897	495,865	438,656	
140,160	36,000	9,476	58,051	19,438	17,195	
7,008	1,800	473	2,903	972	860	
0.3%	0.04%	0.2%	0.2%	0.5%	1.3%	
5%	5%	5%	5%	5%	5%	
4.7%	4.96%	-4.8%	-4.8%	-4.5%	-3.7%	

4-3-4

:

:

-1

-2

2003

%50

" "

-3

-4)

(2

.()

.(4-4)

4-4
1-4-4

%70

14

%99

(22)

:(22)

1	1	2	0	2	1	4	0	4	3		1
0	0	0	0	0	0	0	0	0	0		2
3	0	2	0	2	1	5	0	3	0		3
0	0	0	1	0	3	2	0	0	1		4
0	1	0	0	0	2	0	1	0	48	()	5
0	1	0	0	0	2	0	0	0	13		
0	8	0	7	0	25	0	22	0	53	()	6
0	0	0	4	0	7	0	1	0	0		
0	0	0	0	0	1	2 (0)	0	0	0) (7
0	0	0	5 (3)	0	7	0	4	0	22		8
1	0	0	0	0	5	2	10	0	2		9
0	0	0	0	0	0	0	0	0	18		10

6	0	0	5	0	13	1	13	0	35		11
0	4 (0)	0	19 (19)	0	13 (13)	0	17 (9)	0	0		12
1	3	1	0	14	18	13	27	1	73	()	13
0	0	1	0	11	3	3	1	1	4		
0	35	0	5	0	12	0	24	0	147	()	14
0	0	0	0	0	1	0	0	0	5		
0	2	0	1	0	7	0	5	0	14	()	15

(22)

. 2004

)

()

(23)

()

:(23)

1	1	1	1	1	1	1	1	1	2	1	1	1	4	1	
2	0	2	1	1	1	1	1	2	3	1	0	1	1	1	
1	1	1	0	1	0	0	1	1	0	0	0	0	1	1	
14	6	5	4	3	1	8	6	7	8	4	8	8	37	1	
0	2	0	0	0	0	1	0	0	1	2	1	1	44		
1	4	0	0	0	0	0	4	8	1	1	1	1	17	5	
10	0	3	10	9	11	1	3	2	0	0	0	0	0	2	

2-4-4

7

24

.(24)

7

24

7

7

.(24)

7

:(24)

1	1	1	1	2	2	2	2	2	2	2	2	3	4	4	4	4	4	4	4		1
1	1	1	1	2	2	2	2	2	2	2	2	3	4	4	4	4	4	4	4		2
1	1	1	1	1	1	1	1	2	2	2	2	4	4	4	4	3	3	3	3		3
1	1	1	1	2	2	2	2	2	2	2	2	3	4	4	4	4	4	4	4		4
1	1	1	1	2	2	2	2	2	2	2	2	3	4	4	4	3	4	3	4		5
1	1	1	1	1	1	1	1	2	2	2	2	3	4	4	4	0	0	0	0		6
1	1	1	1	2	2	2	2	2	2	2	2	3	4	4	4	4	4	4	4		7
1	1	1	1	1	1	1	1	2	2	2	2	4	4	4	4	3	3	3	3		8

1-3-4-4

(25)

118

. 1995

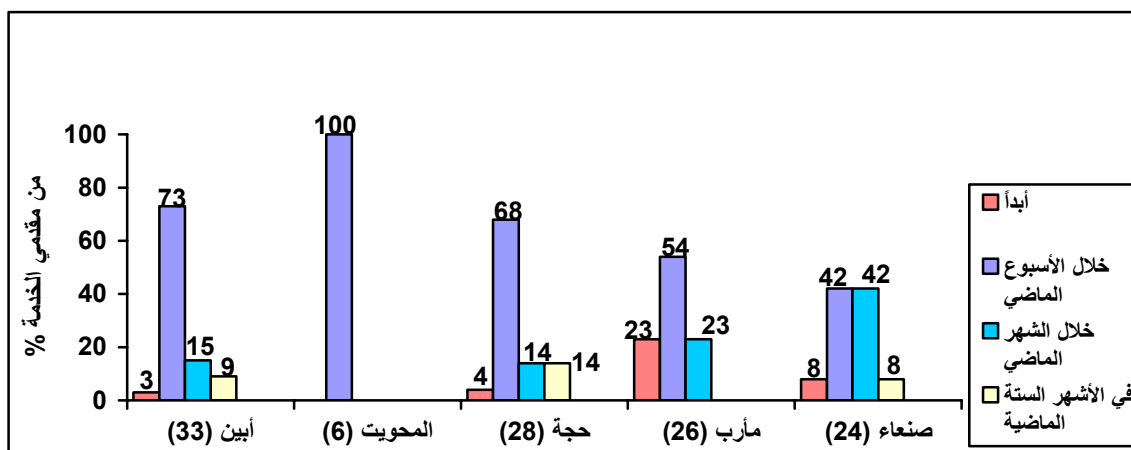
()

%8

%100

.(4)

:(4)



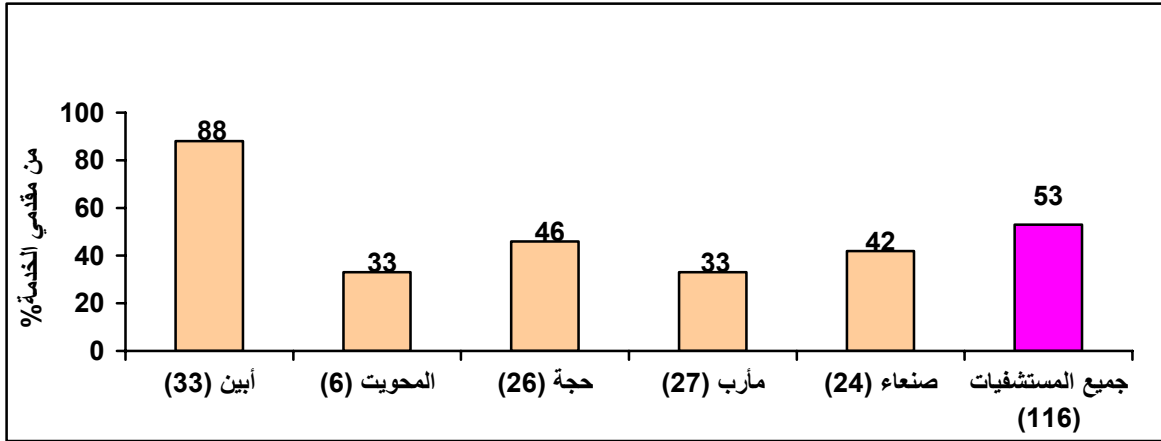
:(25)

6	27	24	28	33		
5	21	23	28	33		
1	6	1	0	0		
1	1	1	4	3		
0	1	0	0	0		
0	2	2	0	4		
0	1	1	0	0		
0	0	0	0	5		
4	4	12	13	21		
0	14	5	11	0		
0	1	2	0	0		
0	3	1	0	0		
1	7	6	10	5		
5	20	18	18	28		
1	1	1	3	1		
2	3	14	2	8	3	1
3	23	9	18	24	3	
1	7	15	7	12	1995	
4	6	4	13	13	2000 – 1995	
1	14	5	8	8	2000	
4	24	21	23	29		
2	3	3	5	4		

%53

.(5)

(5):



2-3-4-4

PPH

14

118

)

.(

)

(1)

.(

(1)

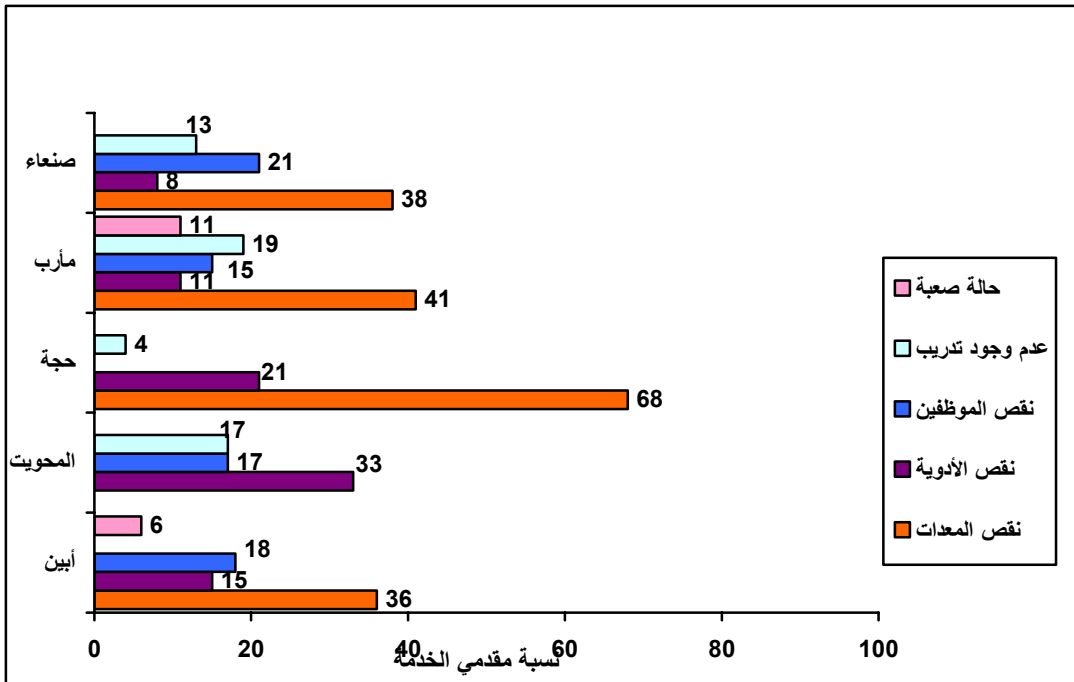
3-3-4-4

(6)

%68

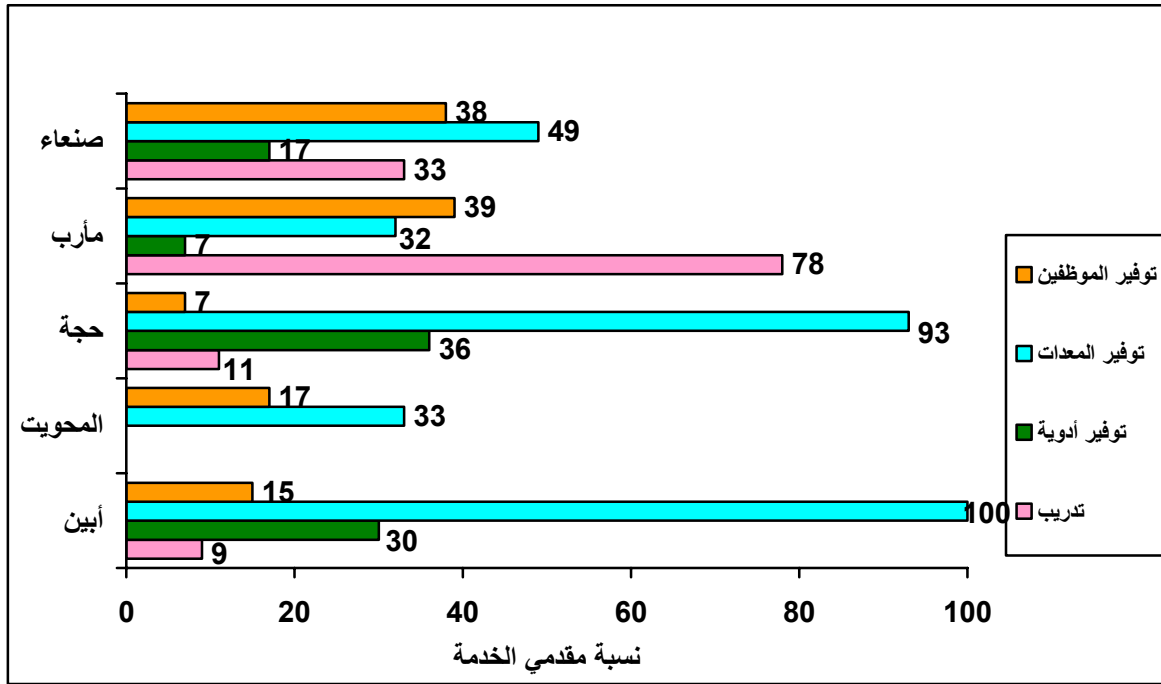
%36

:(6)



(7)

:(7)



5-4

(26)

/

()

:(26)

3	1	1	4	1	2	2		
0	0	1	3	1	0	1		1
0	0	1	3	1	0	1		2
1	0	0	4	1	2	0		3
2	0	1	4	1	1	2		4
0	1	0	4	0	1	2		5
1	0	0	4	1	1	2		6
1	0	0	4	0	1	2		7
1	1	1	4	0	1	2		8
1	0	0	4	1	1	2		9
0	1	1	3	0	1	1		10
0	0	0	2	0	1	1		11
3	1	1	4	1	1	2		12
0	0	0	1	0	0	1		13

)

.(

(27)

(28)

(27)

3	1	1	4	1	2	2		
-	-	0	2	1	-	1		1
2	0	-	2	1	2	2		2
1	-	-	2	1	1	-		3
2	-	0	2	1	0	0		4
-	0	-	1	-	0	0		5
1	-	-	4	1	1	2		6
1	-	-	4	-	0	2		7
1	0	1	1	-	1	2		8
0	-	-	2	1	1	2		9
-	0	1	1	-	1	1		10
-	-	-	1	-	-	0		11
0	0	0	0	1	0	1		12
-	-	-	-	-	-	1		13

:(28)

3	1	1	4	1	2	2		
-	-	0	0	1	-	1		1
2	0	-	0	1	2	2		2
0	-	0	0	0	1	-		3
0	-	0	0	1	0	0		4
-	0	-	0	-	0	1		5
0	-	-	0	0	1	2		6
0	-	-	0	-	0	1		7
0	0	1	0	-	0	2		8
0	-	-	1	0	1	2		9
1	0	1	2	-	1	1		10
-	-	-	1	-	-	1		11
0	0	0	0	1	0	0		12
-	-	-	-	-	-	1		13

:

-

-

-

-

6

24

1-6-4

-1

-2

-3

-4

-5

/

-1

-2

-3

-4

24

-5

-6

/ (1)

(29)

/

%50

/ 24

:(29)

(5)	(6)	(5)	(9)	(7)	(9)	(8)	
2	2	2	1	2	1	0	(2)
2	0	3	1	2	0	0	(4)
NA	1	1	0	1	0	1	(1)
1	0	1	0	0	0	0	(1)
5	3	8	2	5	1	1	(8)

:(30)

(5)	(6)	(5)	(9)	(7)	(9)	(8)	
1	2	1	0	1	0	0	(2)
0	0	1	0	0	0	0	(1)
1	2	2	0	1	0	0	(3)
NA	0	2	1	0	2	1	(3)

(30)

2-6-4

/

(1)

(32) (31)

:(31)

(13)	(11)	(10)	(13)	(13)	(11)	
0	0	0	0	0	0	(2)
0	0	0	0	0	0	(4)
NA	0	0	0	0	0	(1)
0	0	0	1	0	0	(1)
0	0	0	1	0	0	(8)

(32)

(13)	(11)	(10)	(13)	(13)	(11)	
0	0	0	0	0	0	(2)
0	0	0	-	0	0	(1)
0	0	0	0	0	0	(3)
NA	0	0	0	0	0	(3)

: 3-6-4

: - -3-6-4

(34) (33)

)

(%100)

(33)

:

57%	43%	64%	64%	43%	36%	36%	29%	(14)
40%	NA	55%	35%	50%	70%	20%	70%	(20)

(34)

:

21%	50%	14%	64%	14%	7%	(14)
85%	85%	60%	45%	5%	10%	(20)

:

-3-6-4

36

35

(NVA)

D&C

)

(

:(35)

50%	39%	39%	52%	83%	83%	78%	70%	(23)
57%	36%	43%	57%	79%	100%	71%	93%	(14)
50%	0%	50%	25%	25%	75%	0%	50%) /((4)
50%	18%	33%	22%	32%	58%	58%	58%	(12)
50%	0%	0%	21%	29%	100%	33%	44%	(9)

:(36)

83%	39%	78%	39%	48%	65%	(23)
79%	57%	64%	0%	64%	79%	(14)
25%	0%	0%	0%	0%	50%	(4) /
50%	25%	50%	25%	17%	25%	(12)
56%	11%	22%	0%	0%	11%	(9)

:

3-6-4

/ /

.(37)

:(37)

66%	40%	66%	74%	77%	69%	77%	51%	(35)
100%	57%	71%	57%	86%	86%	86%	57%	7) / / (
17%	0%	23%	0%	23%	86%	58%	8%	(12)
78%	0%	78%	44%	67%	78%	11%	67%	(9)
40%	0%	40%	0%	20%	0%	0%	0%	(5)

" "

.(38)

:(38)

%100	(35)
%0	(7) / /
%0	(12)
%67	(9)
%20	(5)

-3-6-4

()

.(39)

%50

(8 7) ()

()

%50

.(40)

:(39)

95%	48%	100%	76%	67%	76%	52%	48%	(21)
25%	0%	25%	25%	25%	50%	0%	0%	(4)
51%	22%	64%	40%	38%	51%	18%	29%	(45)

:(40)

71%	62%	76%	48%	57%	43%	(21)	
25%	50%	0%	0%	0%	0%	(4)	
49%	56%	51%	24%	24%	20%	(45)	

:(41)

0	0	0	0	1	0	0	0	
0	0	0	0	0	0	0	0	
0	0	1	1	1	0	0	0	
0	0	1	1	1	0	0	0	
0	0	1	0	0	0	0	0	
0	0	1	1	1	0	0	0	
0	0	1	0	1	0	0	0	

-4-6-4

(43)

(42)

%100

:(42)

0	0	0	1	1	1	0	0	%5 %2
0	0	0	0	0	0	0	0	/
0	0	0	0	0	0	0	0	
0	0	0	1	1	1	0	0	
0	0	0	1	1	1	0	0	
0	0	0	1	1	1	0	0	
0	0	0	0	0	1	0	0	
0	0	0	0	1	1	0	0	
0	0	0	0	0	0	0	0	

:(43)

0	0	1	0	0	0	%5 %2
0	0	0	0	0	0	/
0	0	0	0	0	0	
0	0	1	0	0	0	
0	0	1	0	0	0	
0	0	1	0	0	0	
1	0	1	0	0	0	
1	0	1	0	0	0	
1	0	1	0	0	0	
1	0	1	0	0	0	

-4-6-4

(44)

.(45)

:(44)

0	0	0	0	1	1	2	0	(3)
0	0	0	1	0	0	0	0	(3)
0	0	0	0	0	0	0	0	(6)
1	0	0	2	2	7	4	0	(13)
3	0	3	2	3	3	3	0	(3)
0	0	0	1	0	0	0	0	(4)
0	0	0	0	1	1	1	0	(2)
0	0	0	0	2	1	1	0) (3) (
0	0	0	0	1	0	3	0	(4)

:(45)

0	1	(3)
1	1	(3)
3	3	(6)
7	9	(13)
3	3	(3)
1	1	(4)
1	1	(2)
2	2	(3) ()
4	4	(4)

-4-6-4

:(46)

33%	15%	17%	27%	18%	31%	36%	53%	

(83)

(47)

(46)

%53

()

:(47)

22%	20%	20%	10%	22%	40%	

7-4

)

(

. 2005

2004

2005

2004
%63)

.(48)

(

(

)

. 2005

2004

:(48)

NA	1	NA	1	NA	1	41	6	

2004

2005

.(49)

" "

:(49)

2	NA	55	NA	5	NA	

8-4

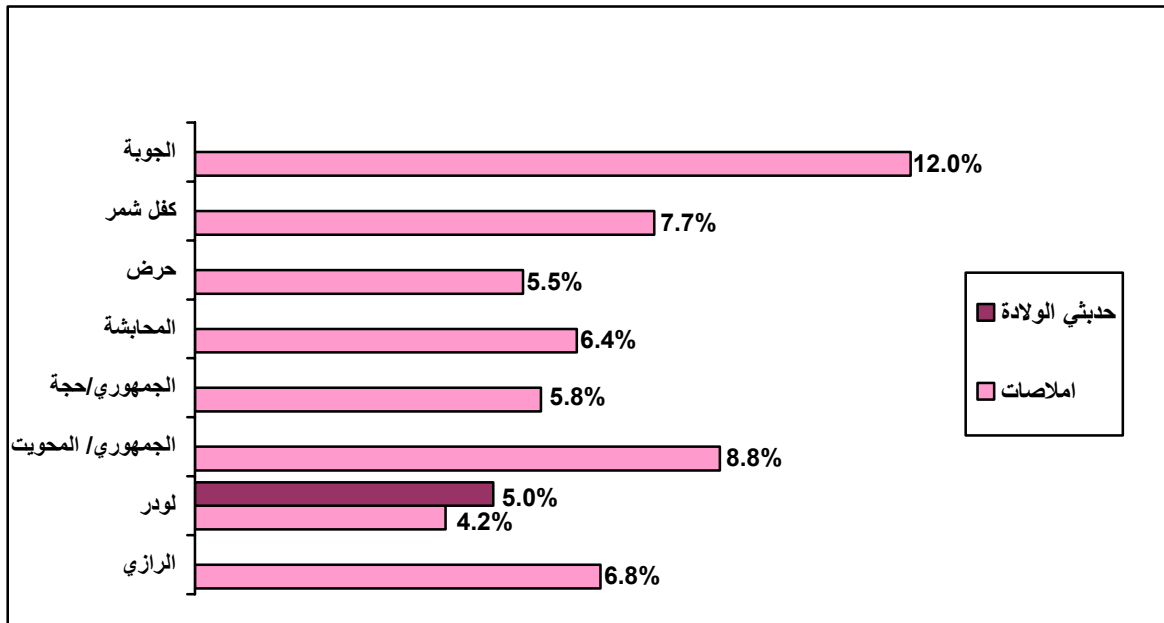
()

()
 .()

- 2004)

: (8)

(2005



325	194	981	499	276	674	1177	1867	
40	15	54	32	16	59	50	127	
NA	NA	NA	NA	NA	NA	56	NA	

--	--	--	--	--	--	--	--	--

(8)

%6.6

(8)

%5

.(2003

100 %3.9)

%4.6

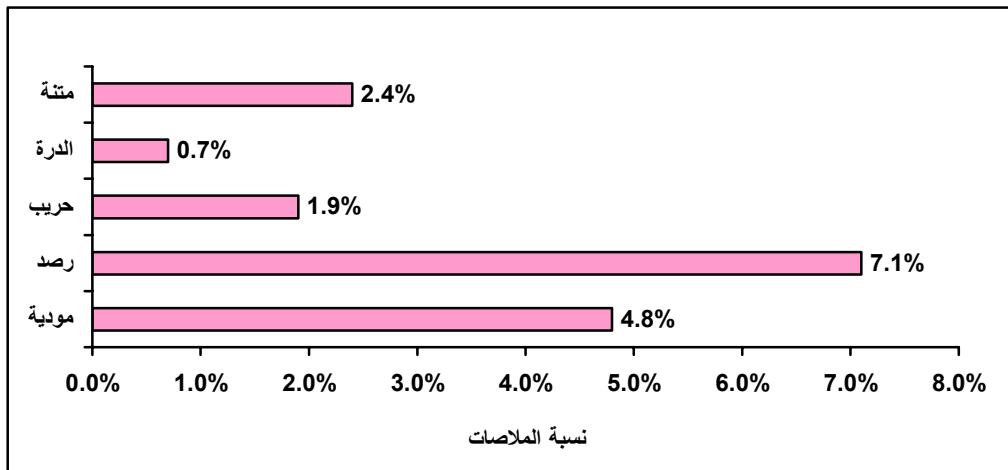
.(9)

/

:(9)

2004

2005



735	9	128	207	379	421	
18 (17m+1f)	NA	1	4	27	20	

:

14

-

-

2-3-4-4

(118)

)

%4

(

)

%2

24

)

.(

.14

-

14

-

(50)

-

:(50)

(6)	=) (8	(6)	=) (8	(6)	=) (8	(6)	=) (8	
50%	25%			83%	88%	50%	63%	
				17%	50%			
				17%	13%			
33%	63%	33%	63%	33%	75%			
67%	88%	67%	88%	17%	25%			
33%	63%	33%	63%	0%	63%			
50%	50%	50%	50%	17%	13%			
17%	63%	17%	63%	17%	13%			
33%	38%	33%	38%	0%	13%			
17%	63%	17%	63%	67%	75%			

) 14

(

: 5

-1

1 8
(500.000)

-2

14

8 %5.6
%76
(%15)

%99

2005 2004

(%1.3)

%0.3
(%0.04)

-3

100

(4) () (2) 1
()

...

()
/

/

-4

14

13

%70

/

%99

-5

:

-1

-2

-3

/

-4

:

:

()

•

•

•

•

•

•

•

•

:

.()

•

•

(1) :

.(500.000

(4)



7

24



•

"

"

•

.

.

.

.

:

-

.

-

.

-

.

.....

-

.

-

.

-

.

-

.

-

.

-

.....

-

.

•

/

•

•

⋮

. 1997

-

:

-

. 1999

2004 – 2003

-

.2005

-

. 2005

2005

-

.193 181 88

:

-

1997 27 18

-

. 1997

92-806-3298-5 : ISBN

.2000

:

-

:

-

. 1999

. 2005

-

:

:

-

ISBN 924156243 9

:

:

-

. 2003